

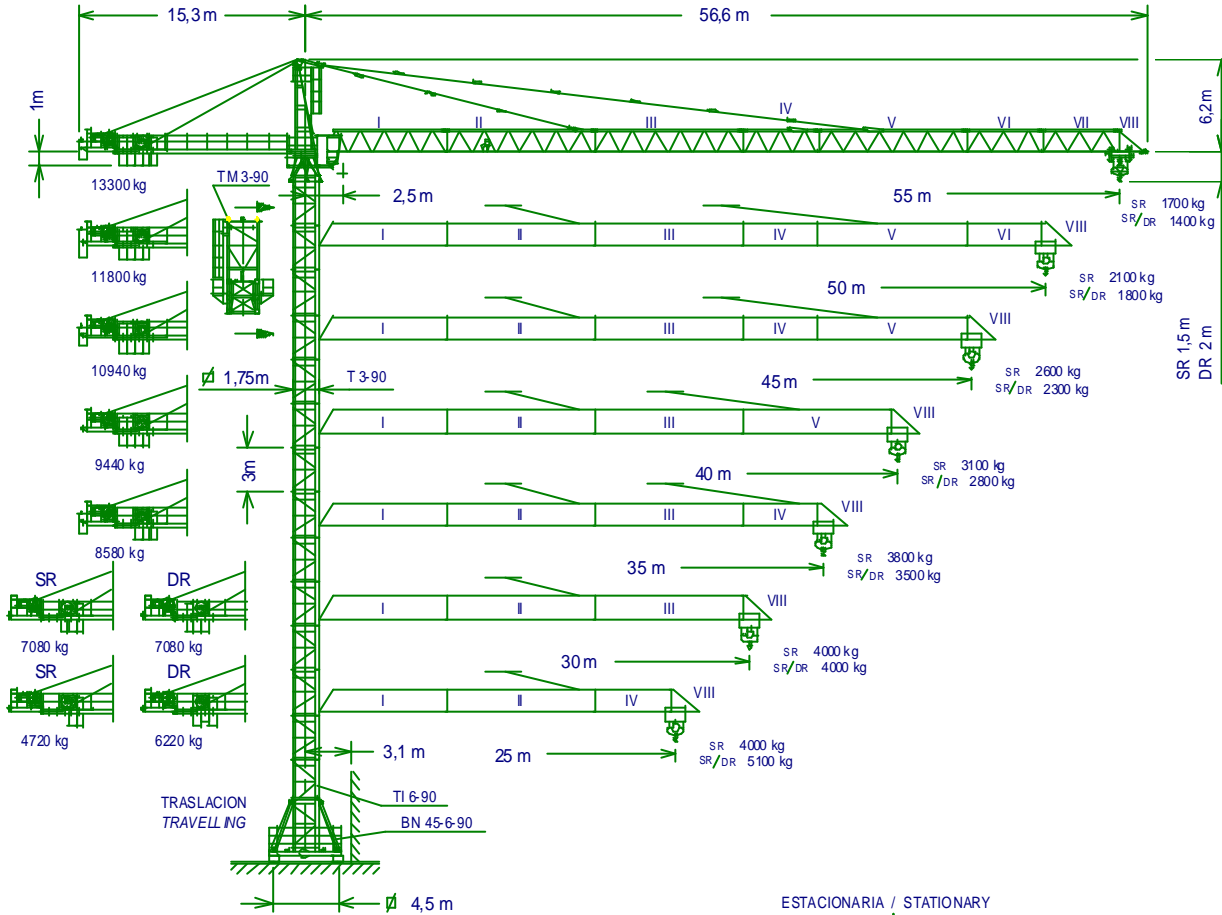
GRUA TORRE TOWER CRANE

J100

De acuerdo con UNE 58-101-92 According to
DIN 15018 H1 B3

Directivas de nivel de potencia acústica / Sound power level directives
84/534/CEE & 87/405/CEE
Directivas de máquinas / Machinery directives
89/392/CEE & 91/368/CEE

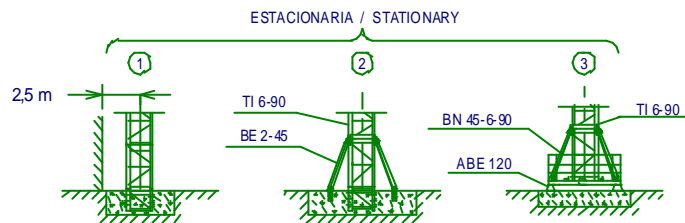
SISTEMA DE CALIDAD CERTIFICADO SEGUN
QUALITY ASSURANCE SYSTEM CERTIFIED ACCORDING TO
UNE-EN-ISO 9001



Altura máxima bajo gancho
sin arriostrar (m) SR
Maximum height under hook
without fastening SR

46,7 45,7 48,7 46,5

TM 3-90	133.35.000	BE 2-45	133.22.000
T 3-90	133.32.000	BN 45-6-90	145.20.000
TI 6-90	133.30.000	ABE 120	142.23.000



LASTRES INFERIORES / LOWER BALLAST

Torres 3m 3m tower sections	Hasta 4 tramos Up to 4 sections	Hasta 8 tramos Up to 8 sections	Hasta 11 tramos Up to 11 sections	Hasta 13 tramos Up to 13 sections
Altura bajo gancho (m) Height under hook (m)	19,7	31,7	40,7	46,7
Lastre base (kg) Base ballast (kg)	36000	48000	60000	72000



JASO EQUIPOS DE OBRAS, S.A.

Fecha / Date: 06-07-01 - Reservado el derecho a modificaciones sin previo aviso / Subject to modification, without previous warning







SR1-SR2 (kg)		Alcance del gancho (m)							Hook reach (m)		3000-4000 a
		55	50	45	40	35	30	25			
PLUMA JIB	55 m	1700	1915	2175	2500	2920	3000-3485	3000-4000	34,21-26,5 m		
	50 m	---	2100	2380	2735	3190	3000-3795	3000-4000	36,92-28,6 m		
	45 m	---	---	2600	2980	3000-3470	3000-4000	3000-4000	39,76-30,8 m		
	40 m	---	---	---	3000-3100	3000-3605	3000-4000	3000-4000	40-31,89 m		
	35 m	---	---	---	---	3000-3800	3000-4000	3000-4000	35-33,42 m		
	30 m	---	---	---	---	---	3000-4000	3000-4000	30 m		
	25 m	---	---	---	---	---	---	3000-4000	25 m		

SR1/DR1 (kg)		Alcance del gancho (m)							Hook reach (m)			3000 / 6000 a
		55	50	45	40	35	30	25	20	15		
PLUMA JIB	55 m	1400	1605	1855	2170	2570	3000 / 3110	3000 / 3860	3000 / 4990	3000 / 6000	30,89 / 13,03 m	
	50 m	---	1800	2070	2415	2850	3000 / 3435	3000 / 4250	3000 / 5475	3000 / 6000	33,56 / 18,42 m	
	45 m	---	---	2300	2670	3000 / 3145	3000 / 3775	3000 / 4660	3000 / 5990	3000 / 6000	36,37 / 19,96 m	
	40 m	---	---	---	2800	3000 / 3295	3000 / 3950	3000 / 4870	3000 / 6000	3000 / 6000	37,81 / 20,75 m	
	35 m	---	---	---	---	3000 / 3500	3000 / 4190	3000 / 5160	3000 / 6000	3000 / 6000	35 / 21,84 m	
	30 m	---	---	---	---	---	3000 / 4000	3000 / 4930	3000 / 6000	3000 / 6000	30 / 20,97 m	
	25 m	---	---	---	---	---	---	3000 / 5100	3000 / 6000	3000 / 6000	25 / 21,61 m	

SR2/DR2 (kg)		Alcance del gancho (m)							Hook reach (m)			4000 / 8000 a
		55	50	45	40	35	30	25	20	15		
PLUMA JIB	55 m	1400	1605	1855	2170	2570	3110	3860	4000 / 4990	4000 / 6865	24,24 / 13,03 m	
	50 m	---	1800	2070	2415	2850	3435	4000 / 4250	4000 / 5475	4000 / 7515	26,34 / 14,16 m	
	45 m	---	---	2300	2670	3145	3775	4000 / 4660	4000 / 5990	4000 / 8000	28,55 / 15,34 m	
	40 m	---	---	---	2800	3295	3950	4000 / 4870	4000 / 6250	4000 / 8000	29,68 / 15,95 m	
	35 m	---	---	---	---	3500	4000 / 4190	4000 / 5160	4000 / 6615	4000 / 8000	31,23 / 16,79 m	
	30 m	---	---	---	---	---	4000	4000 / 4930	4000 / 6325	4000 / 8000	30 / 16,13 m	
	25 m	---	---	---	---	---	---	4000 / 5100	4000 / 6540	4000 / 8000	25 / 16,62 m	

CARACTERISTICAS DE MECANISMOS / MECHANISMS FEATURES

Para 440 V Potencias y velocidades: 20% más.
For 60 Hz Powers and speeds: 20% more.

MECANISMOS MECHANISMS	* opcional optional 				Todos los mecanismos pueden convertirse en DR cambiando el carro y gancho. En versión DR las cargas se duplican y tanto las velocidades y recorrido máximo gancho se reducen a la mitad. All of mechanism can change in to DR, just changing the trolley and the hook. In DR version loads are the double ones and the speed is reduced into the half value.			
	EJ 2556A SR1	* EJ 2544A SR2	* EL 3380A SR1	* EL 3360A SR2	* EL 4880A SR2			
kw	18,4		24,3		35,3			
VELOCIDADES SPEEDS	SR 1 1500 kg 3000 kg SR 2 2000 kg 4000 kg	56/28/7 m/min 287 m/min 44/22/5,5 m/min 22,5,5 m/min	SR 1 1500 kg 3000 kg SR 2 2000 kg 4000 kg	80/40/8 m/min 40/8 m/min 60/30/6 m/min 30/6 m/min	2000 kg 4000 kg	80/40/10 m/min 40/10 m/min		
Max. recorrido gancho Maximum hook course	SR 1 SR 2	136 m en 3 capas / layers 187 m en 4 capas máx. / max. layers 102 m en 3 capas / layers 227 m en 6 capas máx. / max. layers	SR 1 SR 2	136 m en 3 capas / layers 187 m en 4 capas máx. / max. layers 102 m en 3 capas / layers 227 m en 6 capas máx. / max. layers	SR 2 171 m en 3 capas / layers 234 m en 4 capas máx. / max. layers			
MECANISMOS MECHANISMS								
kw	2x4		2 x 5,5		3		9,2	
VELOCIDADES SPEEDS	25 m/min		0...0,16 0,16...0,4 0,4...0,8 r.p.m.		0...15 15...30 30...60 m/min		1 m/min	
 380 V 50Hz	Potencia necesaria con... Required power with...		EJ 2556A = 40,4 kW EL 3380A = 46,3 kW		EL 4880A = 57,3 kW			



DENOMINACION DENOMINATION			L (m)	A (m)	H (m)	Peso (kg) Weight (kg)	
Torre inferior Lower tower			6,235	2,095	2,095	2500	
Torre Tower section	{ 6m. 3m.		6,235	1,796	1,796	2280	
			3,235	1,796	1,796	1211	
Torre asiento de pista, Base punta de torre y Orientación. Sewing table, Tower head base and Sewing mechanism			3,441	2,067	2,162	3400	
Punta de torre Tower head			6,093	1,684	2,052	1520	
Conjunt o asiento pista+punta torre+orientación Sewing table assembly+Tower head+sewing mechanism			8,364	2,120	2,170	4920	
Tramo de pluma Jib section	I		8,660	1,226	1,635	1130	
Tramo de pluma Jib section	{ II III V		10,150	1,226	1,686	1400	
			10,150	1,226	1,530	890	
			10,150	1,226	1,686	785	
Tramo de pluma Jib section	{ IV VI VII		5,250	1,226	1,686	430	
			5,250	1,226	1,530	373	
			5,250	1,226	1,530	305	
Punta pluma Jib end			2,053	1,366	1,640	175	
Pdipasto Hook assembly	{ SR DR		0,990	0,200	1,067	214	
			1,040	0,200	1,725	347	
Camo Crab	{ SR DR		2,005	1,665	1,525	225	
			2,070	1,775	1,550	335	
Contrapluma con plataformas Counterjib with platforms			11,950	1,490	0,709	2376	
Soporte y elevación Support and hoisting	{ EJ 2556A EL 3380A EL 4880A		2,345	2,360	1,700	2480	
			2,345	2,360	2,050	2480	
			2,345	2,360	1,700	2500	
Plataforma y cabina Platform and cabin			3,686	1,630	2,250	820	
Base grúa Crane base	{ Estacionaria II / Stationary II Traslación / Travelling	Diagonal Diagonal		3,330	1,165	0,980	722
				3,720	1,165	0,980	1308
		Larguero unión diagonales Diagonals joining crossbar		1,570	0,100	0,140	52
		Tirante Tie		5,050	0,240	0,380	408
Contrapeso Counterweight	{ Grande / Big Pequeño / small		1,080	0,500	2,025	2360	
			1,080	0,320	1,465	1140	
Lastre Ballast			3,800	0,580	1,500	6000	
Torre de montaje Jacking cage			6,420	2,535	2,410	3080	



